



INDEPENDANCE ET EXPANSION France Small

Morningstar ranking



Luxembourg SICAV compliant with the European UCITS IV Directive

November 2019



William HIGGONS
President of Stanwahr
Portfolio manager



Audrey BACROT
Portfolio manager -
analyst



Arthur MARLE
Portfolio manager -
analyst



Victor HIGGONS
Portfolio manager -
analyst

ASSET CLASS I

- ✓ French Equities
- ✓ Small & Mid Cap

INVESTMENT STYLE I

- ✓ Value Stocks
- ✓ Fully invested (90%-100%)
- ✓ Concentrated portfolio

BENCHMARK I

- ✓ CAC Mid & Small NR since January 2017, CAC Small NR before

OBJECTIVE AND INVESTMENT POLICY I

The Independence et Expansion SICAV ("I&E") is an actively managed fund which seeks capital growth over a three year time frame.

The fund's investment policy is to buy shares of French companies listed on a regulated market whose market capitalization is less than or equal to the highest market capitalization of the CAC Mid & Small index and with low price to cash-flow ratio and to sell the stocks which do not meet these criteria.

The Fund may also purchase convertible bonds and warrants to acquire shares of such companies. The fund may also invest up to 10% of its net assets in companies listed on the Alternext and 10% in non-French European small caps.

The Fund's investment policy incorporates extra-financial environmental, social, and quality of governance (ESG) criteria.

COMMENTS I

Given the valuation gap between growth stocks and the others (value), the market is beginning to wonder if they should not favour the latter.

KEY MONTHLY FIGURES

29/11/2019

NAV	A(C) € 485,50	X(C) € 488,21
Fund assets	€m 232,7	

Net monthly performance

Indépendance et Expansion X(C)	4,2%
CAC Mid & Small NR	2,7%

Portfolio snapshot

Investment ratio	97,4%
Number of stocks in portfolio	40
Top 10 holdings weighting	46%

ANNUALIZED STATISTICS - X(C)

Performance / risk ratios

	1 year	3 years	5 years	10 years
Performance				
I&E	10,6%	3,6%	12,4%	16,1%
CAC M&S NR ⁽¹⁾	9,3%	8,3%	11,0%	9,7%
Volatility				
I&E	15,0%	15,0%	14,0%	14,4%
CAC M&S NR ⁽¹⁾	15,8%	13,3%	13,3%	14,4%
TE	60,7%	52,4%	176,1%	7,0%
IR	0,02	-0,09	0,01	0,92

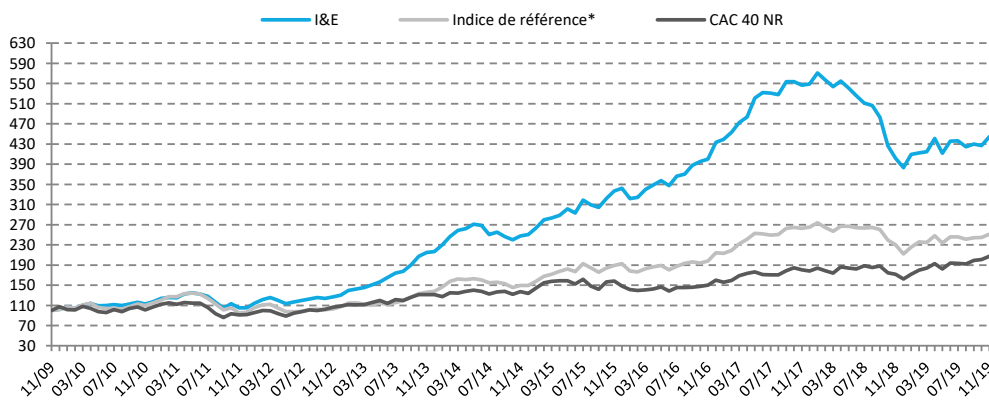
TE : tracking error ; IR : information ratio

CUMULATIVE PERFORMANCE - X(C)

Trailing performance

	I&E	CAC M&S NR ⁽¹⁾	CAC 40 NR
2019	16,1%	18,8%	27,6%
3 months	4,7%	4,2%	7,9%
6 months	8,0%	7,7%	14,0%
1 year	10,6%	9,3%	20,8%
3 years	11,2%	26,9%	38,1%
5 years	79,4%	68,3%	51,2%
7 years	251,4%	145,2%	95,6%
10 years	344,4%	151,3%	107,3%
20 years	1151,5%	298,7%	83,6%

EVOLUTION OF THE FUND'S NAV OVER 10 YEARS - X(C)



FUND FINANCIAL RATIOS

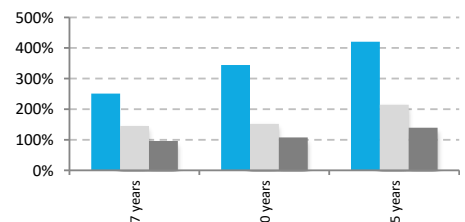
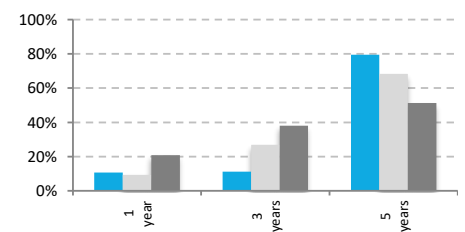
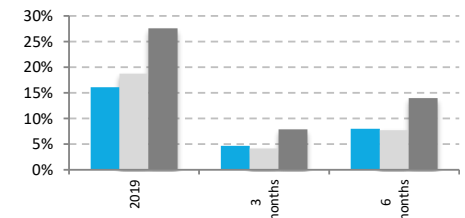
	(2) P/B		P/CF		PER		Yield
	level	spread	level	spread	level	spread	level
I&E median	1,4	-36%	7,4	-33%	12,2	-47%	3,1%
I&E mean	1,6	-25%	7,6	-32%	12,0	-48%	3,4%
I&E asset weighted	1,6	-27%	7,0	-37%	11,6	-50%	3,3%
Cac M&S NR index	2,2		11,1		22,9		2,2%

Source: Stanwahr, Idmidcaps for Cac Mid & Small NR index

Performance net of fees; dividends are accrued.

(1): The benchmark of the fund is the CAC Mid & Small NR index since 12/31/2016. The CAC Small NR was the benchmark of the fund since 12/31/2004. Previously, the benchmark of the fund was the SBF Second Marché index. For time periods before 12/31/2016, the performances of the fund's benchmark presented in this document are the results of the geometrical linking between the 2 indexes for their respective time-periods.

(2): P/B= Price to book ratio; C/CF = Price to Cash Flow ; PER = Price earning ratio; Yield= Stock return / portfolio



INDEPENDANCE ET EXPANSION SICAV

Share class X(C) - LU0104337620

Share class A(C) - LU0131510165

I SECTOR BREAKDOWN

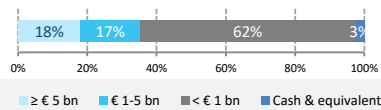
Sectors	Weights
Technology	14,3%
Miscellaneous	10,5%
Automotive supplier	9,6%
Chemicals	8,4%
Real estate	8,3%
Corporate services	8,2%
Temporary work	7,2%
Electric power industry	6,9%
Capital goods	6,5%
Financial	5,7%
Specialized wholesale	4,5%
Transport	3,9%
Plastics manufacturing	1,8%
Environmental services	1,2%
Agri-Food	0,4%
Steel industry	0,0%
Cash	2,6%
Total	100%

Source for sectors classification: Stanwahr

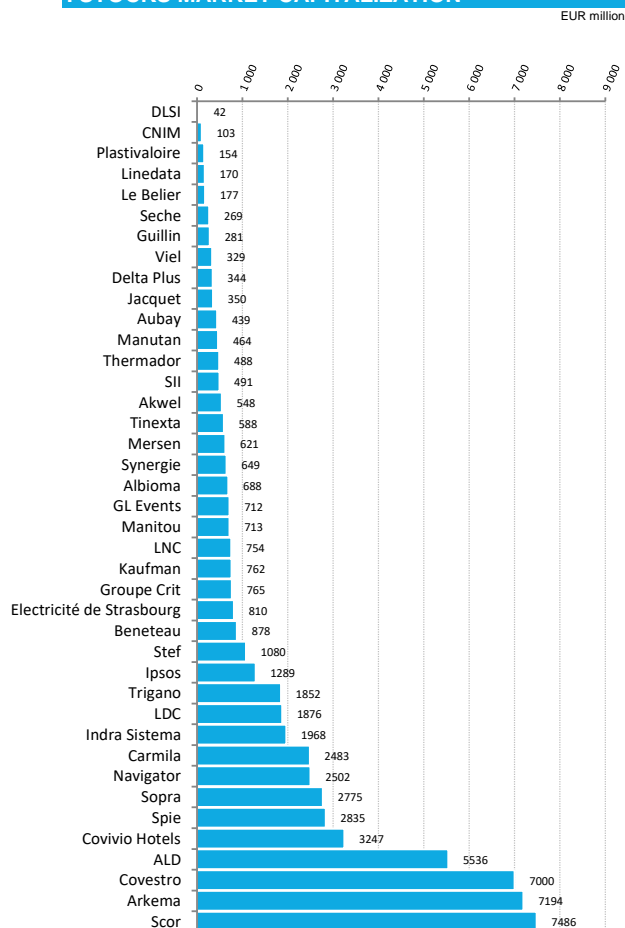
I TOP HOLDINGS

Stocks	Weights
ALD	7%
SII	6%
ARKEMA	6%
ALBIOMA	5%
AKWEL	5%
GROUPE CRIT	4%
STEF-TFE	4%
MERSEN	4%
SCOR	3%
LE BELIER	3%

I MARKET CAP BREAKDOWN



I STOCKS MARKET CAPITALIZATION



I MAIN VARIATIONS OVER THE MONTH

Stocks	Perf.	Commentary
Outperformance vs. the benchmark		
Beneteau	28,6%	Low valuation
Trigano	18,9%	A reassuring speech for 2019/20
Delta Plus	15,7%	-
Plastivaloire	15,5%	Good Q3
Akwel	15,2%	Aberrant valuation
Le Belier	14,7%	Speculative
Underperformance vs. the benchmark		
Spie	-2,6%	Well valued
Jacquet	-3,1%	Disappointing Q3, difficult market
Thermador	-3,2%	-
Tinexta	-4,4%	Well valued
Guillin	-5,0%	Unattractive speech
CNIM	-21,3%	In losses

I RISK / RETURN PROFILE



This indicator represents the annual historical volatility of the Fund over a 5-year period. In the absence of sufficient historical data, the risk indicator incorporates data simulated from a benchmark portfolio. Risk category 5 reflects a high potential gain and/or loss in the portfolio's value. This is achieved through investments in equities in small- or medium-sized companies on the European market. Historical data such as that used to calculate the synthetic indicator cannot be considered as a reliable indication of the Fund's future risk profile. The risk category associated with the Fund is not guaranteed and may change over time. The lowest risk category does not mean "risk free". Your initial investment is not guaranteed.

I MAIN CHARACTERISTICS

Valuation: every Wednesday of each month (or next business day)
 Management fees: 1,95% / year inclusive of taxes
 Performance fees: 10%
 Subscription and Redemption fees: 0%

I SUBSCRIPTIONS / REDEMPTIONS

Subscription: every Wednesday of each month (or next business day)
 Redemption: every Wednesday of each month (or next business day)
 Caceis Bank Luxembourg
 Tel: 00 352 47 67 23 33
 Fax: 00 352 47 67 70 59

I FUND'S THIRD PARTIES

Depositary bank: Caceis Bank Luxembourg
 Fund administrator: Caceis Bank Luxembourg
 Statutory auditor: Deloitte SA

I SECTOR BREAKDOWN

Sectors

The information included herein does not constitute a solicitation, offer or recommendation to buy or sell any securities or securities mentioned in this report. Similarly, this should in no case be seen as an invite to engage in any other transaction or to provide any investment advice or service. Potential subscribers are advised to seek professional advice on the laws and regulations applicable to sales, purchases or sales of shares in its country of origin, residence or domicile. No responsibility is due to respect to the accuracy, reliability or veracity of the information available in this report. Past performance is not a guarantee of future income. The value of investments may fall as well as rise. All subscriptions in a compartment which is mentioned in this report may not be validly made only on the basis of information contained in the full or simplified prospectus and this, together with that published in the latest version of their annual or half-year report. Stanwahr, while acting in the best interest of its customers, can not be bound to any obligation of results, whatever they are, or performance. Stanwahr and people associated with it, its directors and employees disclaim any liability for any direct, indirect or consequential, costs or expenses, if any